

# TESTIMONY

Presented by the



**In Support of:** Case No. 02-17 (PUD and Map Amendment @ Square 1663, Lot 805 and a Portion of Lot 7-5401 Western Avenue, NW)

---

<b>Name</b>	<u>The Chevy Chase Plaza Children's Center, Inc.</u>		
<b>Address</b>	<u>5310 43<sup>rd</sup> Street, NW</u> <u>Washington, DC 20015</u>		
<b>Contact Person</b>	<u>Lisa Danahy, Executive Director</u> <u>Courtney Hyde, President, Board of Directors</u>		
<b>Telephone</b>	<u>202-244-1402</u>	<b>Facsimile</b>	<u>202-537-3700</u>

---

In 1988, Zoning Order 519 called for the creation of an amenity, in the form of a non-profit child care facility, within Square 1661, for the Friendship Heights community. It was hoped that this amenity would bring much-needed child care to the families who live and work in this neighborhood.

The Chevy Chase Plaza Children's Center ("CCPCC") began operation in 1989, in accordance with the Zoning Order, as a small non-profit corporation licensed to provide child care for approximately 31 children in the Friendship Heights community. CCPCC has built an outstanding reputation for offering innovative learning experiences to neighborhood children between the ages of three months and five years. We have a long-standing history of community involvement and are committed to preserving the integrity of this neighborhood.

*Attachment 1 contains a few highlights of the CCPCC program.*

ZONING COMMISSION  
District of Columbia  
02-17  
203  
ZONING COMMISSION  
District of Columbia  
CASE NO. 02-17  
Exhibit NO. 203

Currently, 87% of CCPCC families live or work in Ward 3. Of the current families, 58% live or work within ANC 3E. All of the current enrollees who live in the District of Columbia live within fifteen blocks of our school.

Seventy percent of our waitlist families are DC residents, and 20% live just across the Maryland line in Chevy Chase. Eighty-one percent of our waitlist families live within 15 blocks of the school. (Employer data for waitlist families is unavailable.)

Alumni families who live or work in Ward 3 represent 85% of the school's total alumni population for the past six years. Seventy-one percent of our alumni families live within fifteen blocks, and 31% live less than five blocks from our school.

*Attachment 2 provides further details regarding the demographic composition of our students.*

According to *Child Care Profiles*, a statistical analysis prepared by the University of the District of Columbia, Center for Applied Research and Urban Policy, and distributed by the Office of Early Childhood Development, District of Columbia Department of Human Services, almost 700 children living in Ward 3 are on waiting lists for child care. Of those 700, five hundred and ninety (or 86%) are under the age of four. The waitlist for CCPCC alone is nearing 100 children between the ages of zero and four years.

There are approximately 2,000 licensed child care spaces in Ward 3 to accommodate the estimated 6,500 children under the age of 14 who live in the ward, 5,600 of whom have all working parents. Licensed infant child care spaces account for only 143 of the 2,009 spaces reported in Ward 3.

CCPCC currently provides seven of the 143 spaces, or five percent of the total infant spaces existing in Ward 3. CCPCC is also one of the 21% of child development centers reported who indicated a willingness to expand their services to care for additional children.

*Attachment 3 contains excerpts from the Child Care Profiles, which summarize child care center capacity and service characteristics for the District of Columbia, and specifically Ward 3.*

There is a demonstrated need for quality child care in the District of Columbia, including Ward 3. The District of Columbia has acknowledged this need through its Comprehensive Plan, and has made one of its goals to "increase the supply of child care facilities" (Section 1409.2(m)), specifically, to "increase the supply of child care facilities in each residential area." (Section 300.7)

Child care centers throughout the area are finding it increasingly difficult to secure space and to generate the revenue necessary to expand, while continuing to make child care affordable. A collaborative effort between private businesses, government bodies, and individuals is needed in order to bring more affordable, quality child care to our neighborhoods.

Through their PUD application, Stonebridge Associates appears to be offering to partner with the District of Columbia and the neighborhood to fulfill the intent of the Comprehensive Plan and to bring to the Friendship Heights community the additional child care services that are so greatly needed. A rent-free concession, such as what is being proposed by Stonebridge, would directly benefit the children attending the center. Without this type of financial support, the cost to be located in Ward 3 would make child care prohibitive.

This PUD provides a substantial amenity through the child care component – an amenity that should be weighted heavily in the assessment of the overall value of this project to local residents. With the child care amenity, in conjunction with the other amenities proposed within this PUD, the community stands to gain a great deal through this development, and therefore, this application should be approved.

# CCPCC is...

- *A non-profit corporation, established in 1989*
- *Managed by a Board of Directors, comprised of local parents and professionals*
- *Educating & supporting neighborhood children of working parents through full day, full-time and part-time enrollment*
- *Providing enrollment preference for families who live and/or work in the ANC 3E neighborhood, with the goal of achieving a balance on our waitlist of neighborhood families and employees of neighborhood businesses*
- *Subsidizing child-care through needs-based tuition assistance, tuition reduction for sibling enrollment, and discounted care for children of CCPCC teachers*
- *Linking the children to the neighborhood through our curriculum and opening their eyes to all that surrounds them as a result of our location*
- *Partnering with the ANC, local businesses, employers, public and private schools, residents, and the DC government (including the Office of Early Childhood, Police Department, Fire Department)*
- *Meeting the real-world demand for quality child care in our community and willing to grow with the needs of our neighbors*

# DEMOGRAPHIC STATISTICS

## For CCPCC

CURRENT ENROLLMENT	31	
Ward 3 Residents/Employees	27	87%
Ward 3 Residents	21	69%
ANC3E Residents/Employees	18	58%
Non-Ward 3 Residents/Employees	4	13%
WAITLIST FAMILIES	92	
DC Residents	64	69.5%
Maryland (Chevy Chase)	18	19.5%
Maryland (Other)	10	11%
ALUMNI FAMILIES (5 years)	90	
DC Residents/Ward 3 Employees	76	84.5%
DC Residents	52	58%
Maryland	36	40%
Virginia	2	2%

---

## MAP KEY

Children Per 5-Block Range:

Above 30



20 to 30



15 to 20



10 to 15

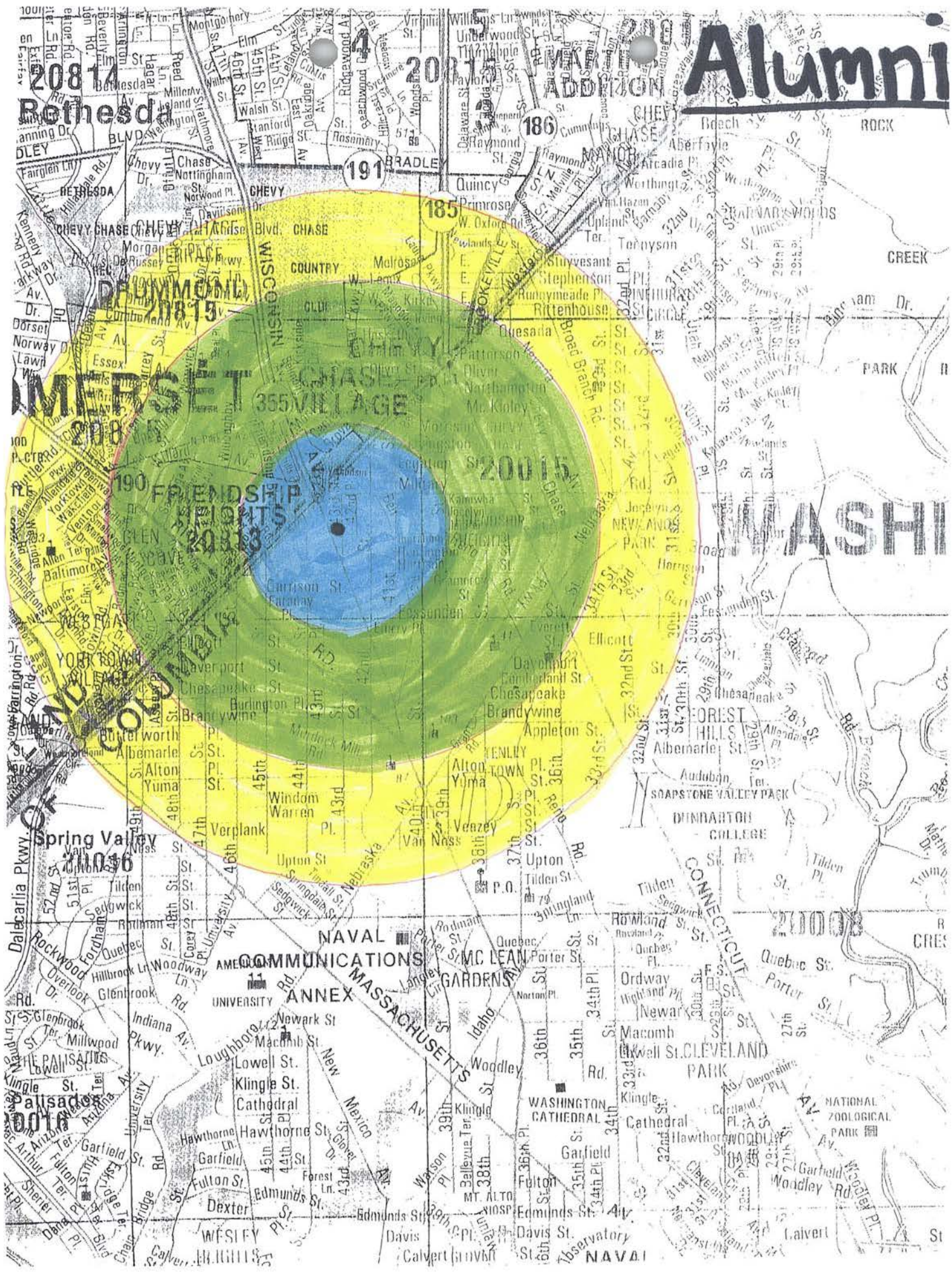


5 to 10



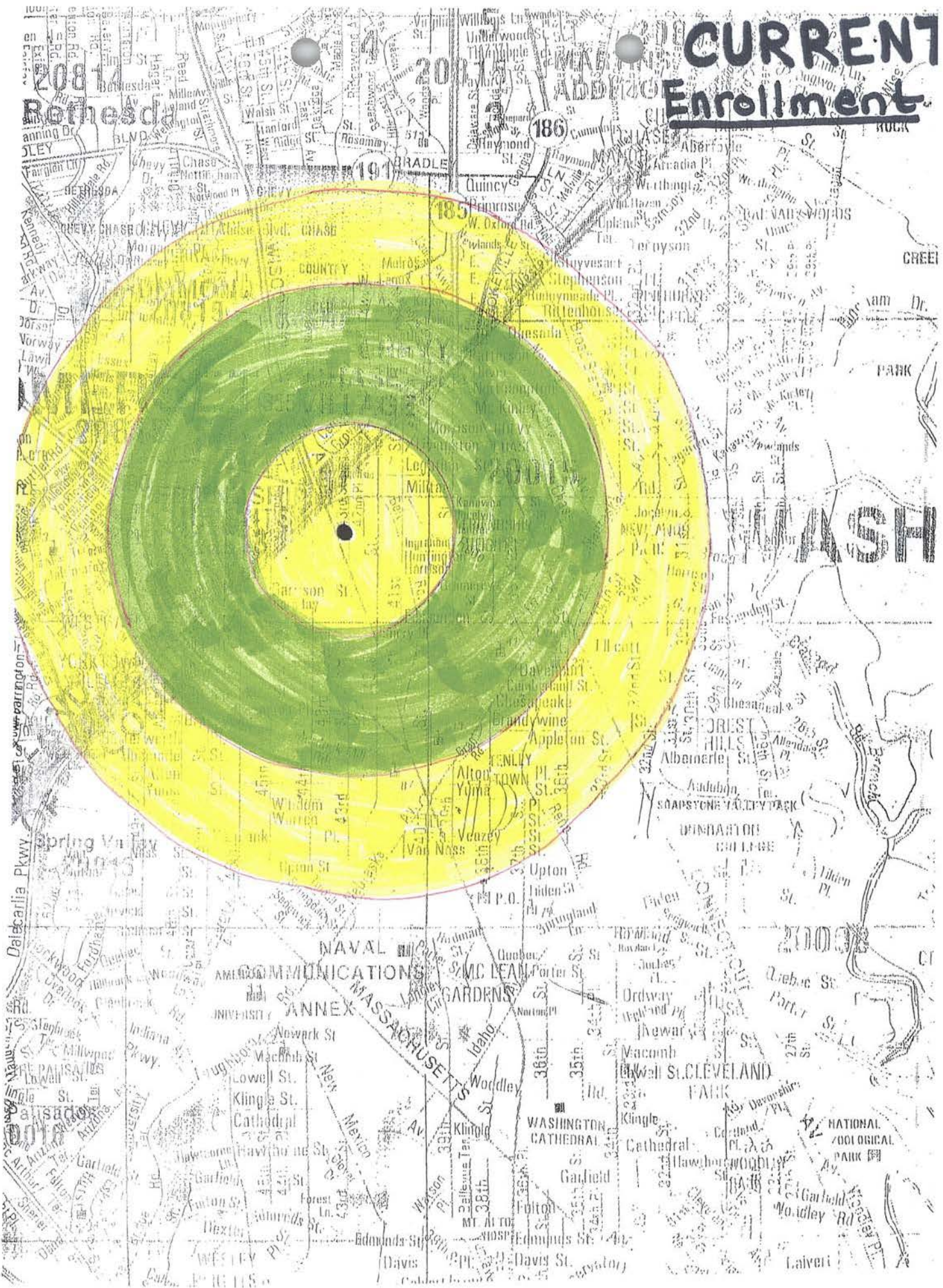


# Alumni



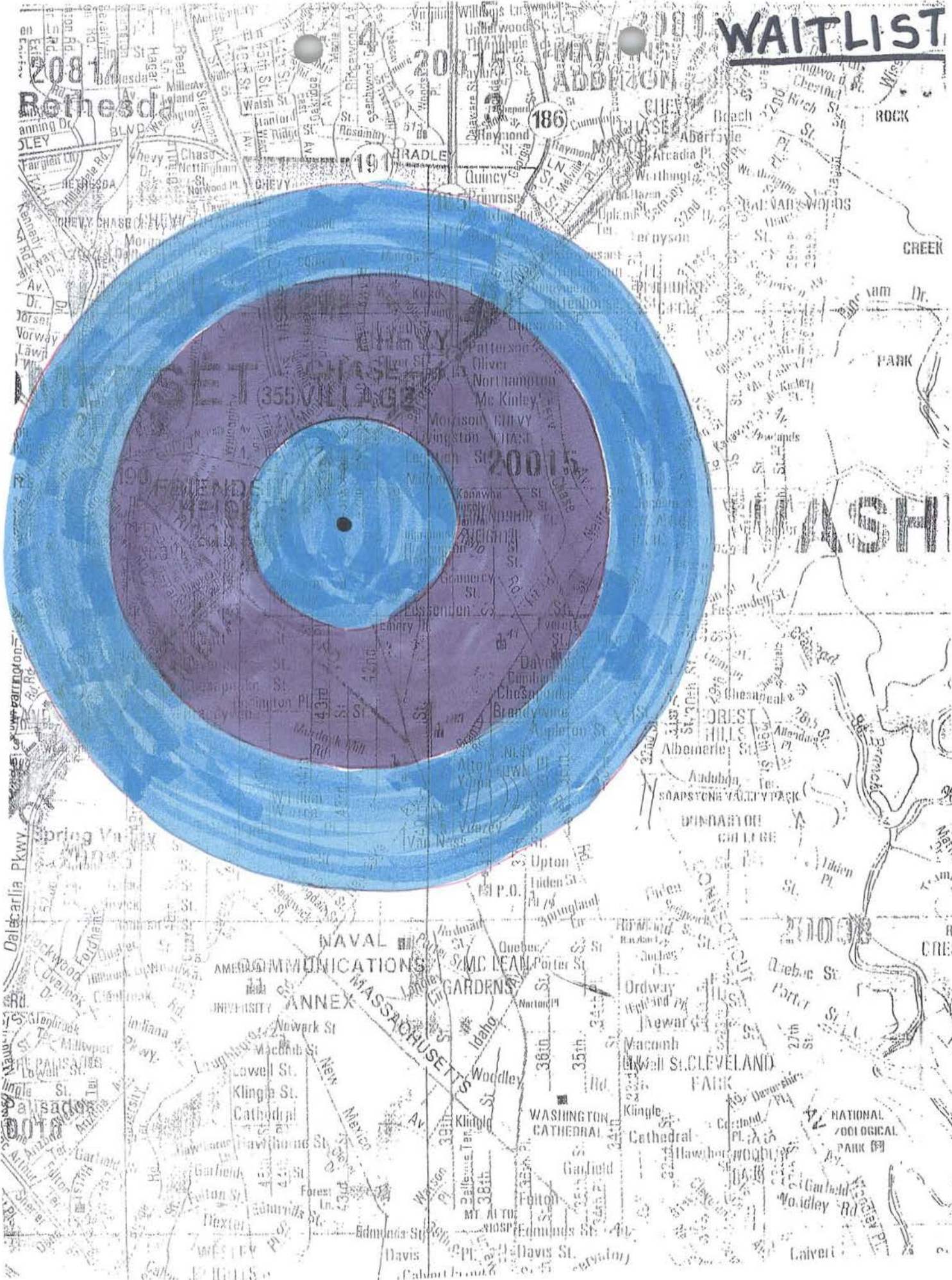


# CURRENT Enrollment





# WAITLIST





**CURRENT**  
**Enrollment**

**ALUMNI**

**&**

**WAITLIST**





# Child Care Profiles

District of Columbia

November 2002

Office of Early Childhood Development  
District of Columbia  
Department of Human Services

## Child Care in the District of Columbia

### Population Facts\*

Residents (2000 Census)	572,059
Children under 14	92,466
Children 0 thru 2	19,276
Children 3 thru 4	13,260
Children 5 thru 13	59,930
Median Income <i>family</i>	\$40,127
Children in poverty	30.2%
Low-Income Children	53%

Licensed Child Care Supply = 23,511  
 Licensed Infant Slots = 3,533  
 Licensed Facilities  
 Child Development Centers = 369  
 Child Development Homes = 224

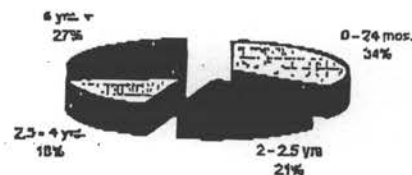
Children on Waiting Lists

Total	9,952
Up to 24 months	3,428
2-2½ years	2,081
2½ -4 years	1,794
4 years +	2,649

Capacity	2000	2002	Change
Centers	20,112	22,487	11.6%
Family Homes	1,145	1,074	-6.2%
Infant Slots	2,474	3,533	42.8%

96% of all enrolled child care slots are in child development centers

Up to 24 months	14% of center slots
Preschool (2-4 yrs.)	45% of center slots
School age (4 yrs.+)	41% of center slots



### Children Needing Services

Estimated number of children with all parents working:

* 0-5	24,480
* 6-17	49,260
Total	73,740

\* Source: Census 2000

## D.C. Child Care Service Characteristics

### Types of Services Offered by Centers

Service Provided	% of Centers
Full-time care	96%
Part-time care	39%
After School care	43%
Nontraditional hours	12%
Children with disabilities	52%

### Types of Providers (By Self-Type)

Provider Type	% of Centers
Nonprofit	60%
For Profit	20%
Employer/Corporate	4%
Private School	9%
Government Agency	17%





Office of Early Childhood Development  
 District of Columbia  
 Department of Human Services

# Child Care Profiles

District of Columbia - Ward 3

November 2002

## Child Care in Ward 3

Licensed Child Care Supply = 2,009

Licensed Center Slots = 1,995

Licensed Home Slots = 14

Licensed Infant Slots = 143

99.7% of all enrolled child care slots are in child development centers

Up to 24 months 5% of center slots

Preschool (2-4 yrs.) 58% of center slots

School age (4 yrs.+) 43% of center slots

### Population Facts\*

Residents (2000 Census) 67,972

Children under 14 6,449

Children 0 thru 2 1,731

Children 3 thru 4 962

Children 5 thru 13 3,756

Median Income \$71,875

Children in poverty 3.0%

Low-income Children 7.4%

## Children on Waiting Lists

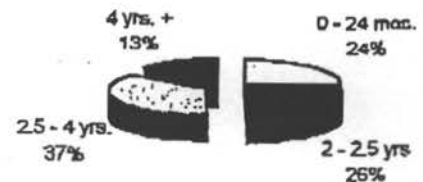
Total 689

Up to 24 months 166

2-2.5 years 177

2.5-4 years 253

Over 4 years 93



## Daily Child Care Rates at Child Care Centers

Children Needing Services		Service Group	Market Rate (75th percentile)	DHS Contract	All Centers
Estimated number of children with all parents working:					
★ 0-5	2,029	★ Infant	\$ 50.81	\$ NA	\$ 50.81
★ 6-17	3,537	★ Toddler I	\$ 47.34	\$ NA	\$ 47.34
		★ Toddler II	\$ 60.78	\$ 44.39	\$ 52.68
		★ Preschool	\$ 49.27	\$ 44.39	\$ 47.22
Total	5,566	★ School-Age	\$ 60.38	\$ 33.55	\$ 56.65

\* Source: Census 2000

## Ward 3 Child Care Center Service Characteristics

### Types of Services Offered by Centers

Service Provided	% of Centers
★ Full-time Care	52%
★ Part-time Care	68%
★ After School Care	32%
★ Evening	12%
★ Weekend	0%
★ Overnight	0%
★ Holiday	0%
★ Drop in	12%
★ Emergency or Back Up Care	12%
★ Children with Disabilities	56%

### Types of Providers (by Self-Type)

Provider Type	% of Centers
★ Nonprofit	76%
★ For Profit	8%
★ Employer / Corporate	8%
★ Private School	32%
★ Government Agency	9%
★ Head Start	4%
★ Part of a System	4%
★ Faith-Based Organization	16%

## Ward 3 Family Home Provider Service Characteristics

### Types of Services Offered by Centers

Service Provided	% of Homes
★ Full-time Care	100%
★ Part-time Care	100%
★ Evening	0%
★ Weekend	0%
★ Overnight	0%
★ Holiday	0%
★ Drop in	0%
★ Emergency or Back Up Care	0%
★ Children with Disabilities	0%

### Types of Providers (by Self-Type)

Provider Type	% of Homes
★ Nonprofit	0%
★ For Profit	100%
★ Employer / Corporate	0%
★ Private School	0%
★ Government Agency	0%
★ Head Start	0%
★ Part of a System	0%
★ Faith-Based Organization	0%

## Other Child Care Facts and Figures

- ★ 3% of children enrolled at child development centers are children with disabilities.
- ★ 21% of child development centers are willing to expand their services to care for additional children
- ★ No providers indicated a willingness to expand overnight or extended hours of service.